

*The UCI and the fight against doping*  
*A long history of cat and mouse*

Pat McQuaid, President of the UCI

Thursday, 27th November 2008



*Union Cycliste Internationale*



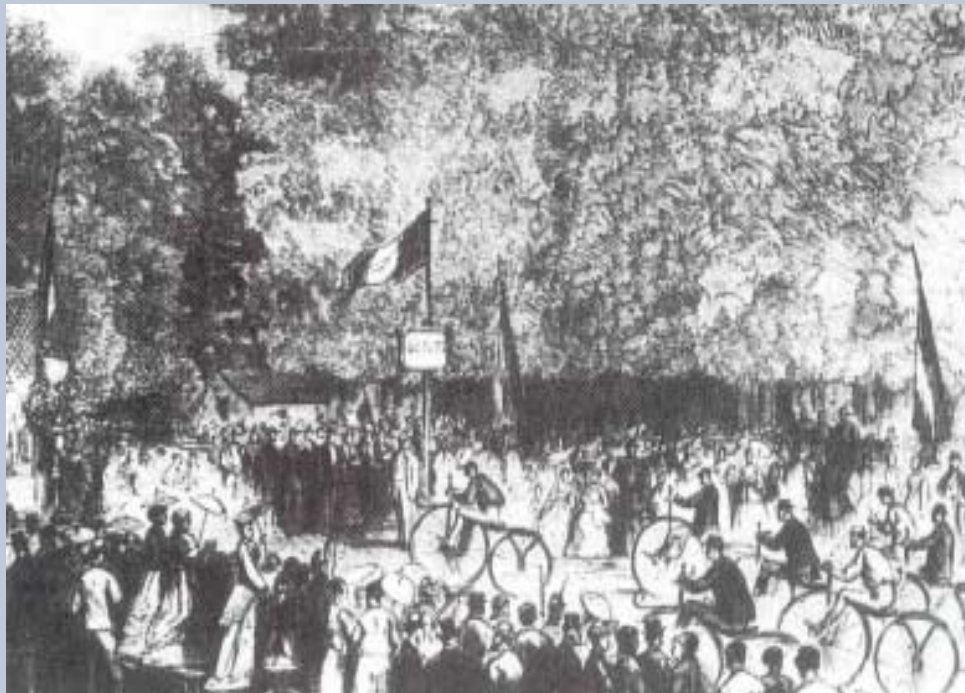
# *A long history of cat and mouse*

- Cycling as a sport
- UCI's record of innovative testing
- The biological passport, a new era of detection
- Future strategy



# Cycling – a taxing endurance sport

The first official race was held in Paris in 1868 and was from conception a difficult and physically demanding sport (inaugural Paris-Brest-Paris, 1200 km)





# UCI's main challenge, to break the culture of doping

- 1923 Tour de France winner Henri Pelissier admits use of drugs (*cocaine, chloroform, and horse tranquilisers*)
- 1960 Knud Enemark Jensen dies at the Olympics in Rome (*amphetamines*)
- 1967 Tom Simpson dies on the Tour de France stage over Mont Ventoux (*amphetamines and alcohol*)
- 1998 Festina – organised team level doping (*EPO, HgH and testosterone*)



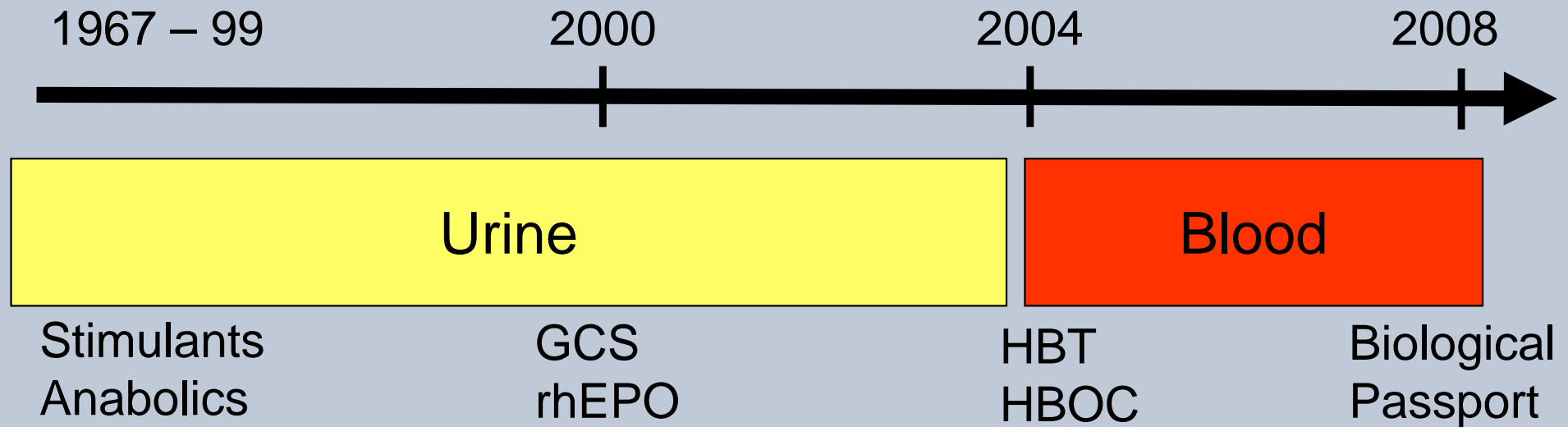


## *Consistently at the forefront of new detection methods*

- **1960s** - first Anti Doping Rules / Prohibited Substance list
- **1964** - UCI is first IF to establish a Medical Commission responsible for protecting riders' health
- **1997-2005** - introduction of haematocrit level / no-start rule  
- subsequent introduction of limits for other parameters
- **2000 – 2004** - first IF to introduce tests for corticosteroids and EPO in urine, homologous blood transfusion and synthetic haemoglobin in blood
- **2008** – first IF to introduce Biological Passport

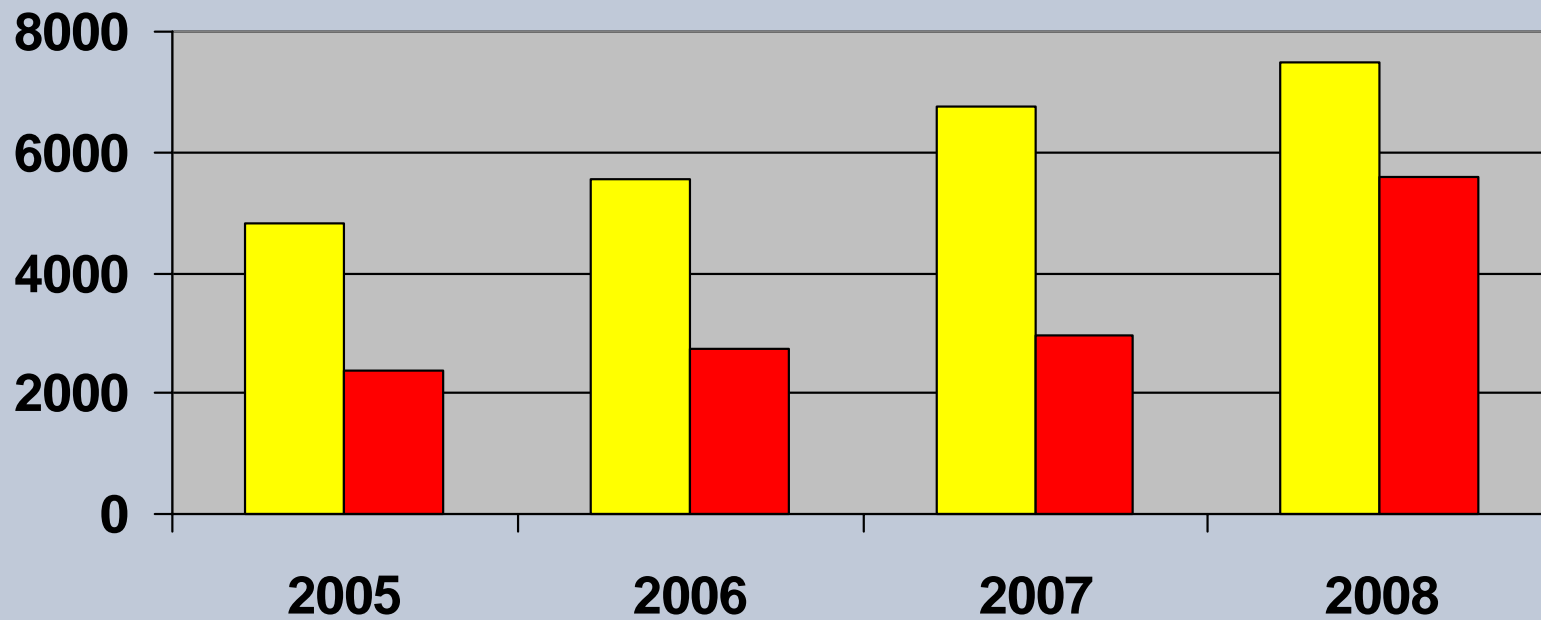


# UCI testing





# UCI testing



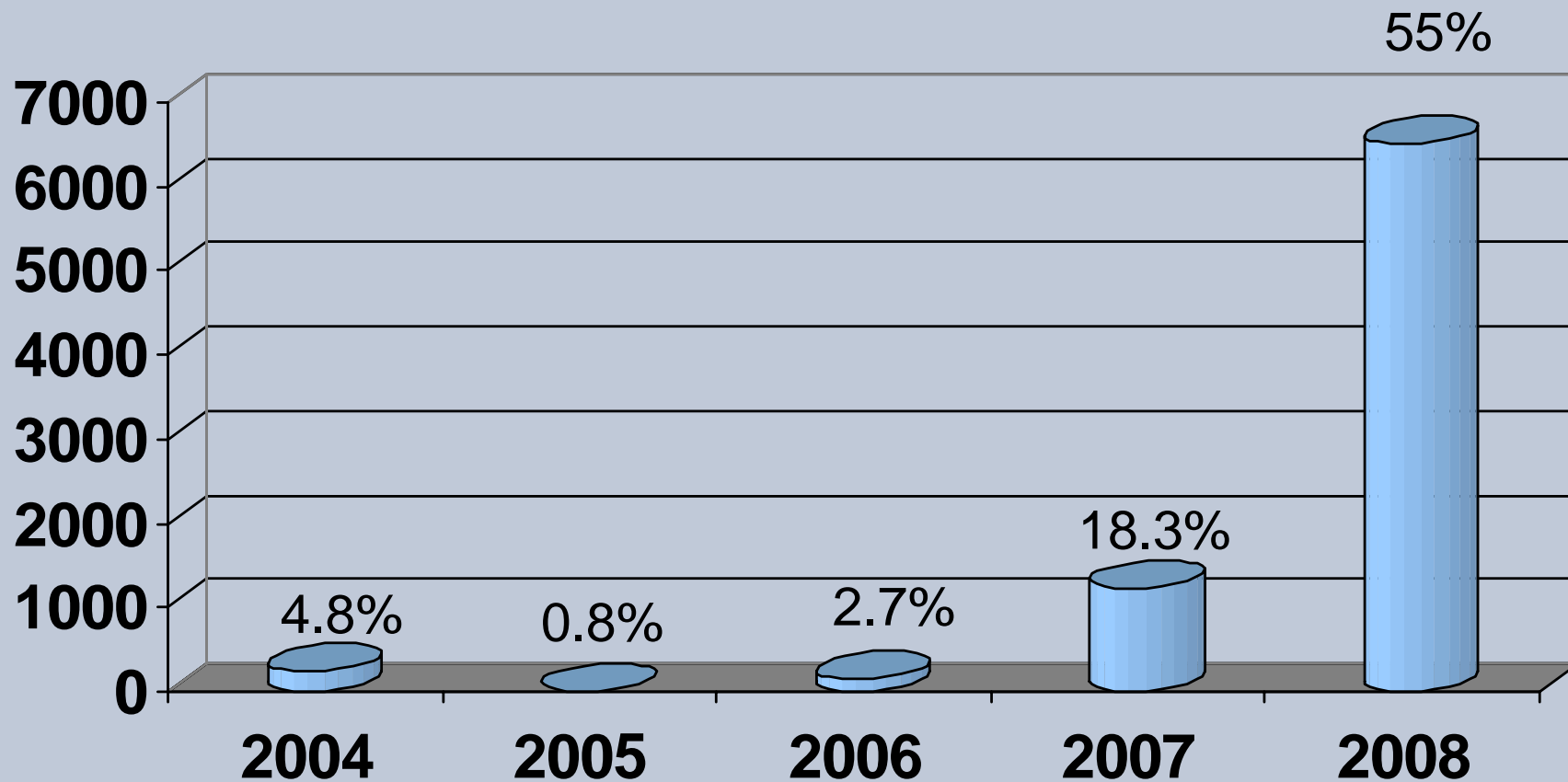
Urine



Blood



# Out-of-competition tests conducted by UCI





# *Anti-doping tests in cycling compared to other sports*

<b>Sport</b>	<b>2004</b>	<b>2005</b>	<b>2006</b>	<b>2007</b>
<b>All Olympic Sports</b>	<b>128'591</b>	<b>139'836</b>	<b>156'866</b>	<b>174'483</b>
<b>Football</b>	<b>22'329</b>	<b>23'478</b>	<b>25'727</b>	<b>28'313</b>
<b>Athletics</b>	<b>19'991</b>	<b>20'464</b>	<b>19'781</b>	<b>23'305</b>
<b>Cycling</b>	<b>13'199</b>	<b>12'751</b>	<b>14'229</b>	<b>16'462</b>
<b>Aquatics</b>	<b>9'518</b>	<b>10'352</b>	<b>11'582</b>	<b>12'550</b>
<b>Basketball</b>	<b>3'990</b>	<b>4'785</b>	<b>7'473</b>	<b>8'674</b>
<b>Skiing</b>	<b>3'354</b>	<b>4'467</b>	<b>3'901</b>	<b>3'844</b>
<b>Volleyball</b>	<b>3'024</b>	<b>2'621</b>	<b>3'340</b>	<b>4'136</b>
<b>Tennis</b>	<b>2'538</b>	<b>2'558</b>	<b>2'748</b>	<b>3'050</b>

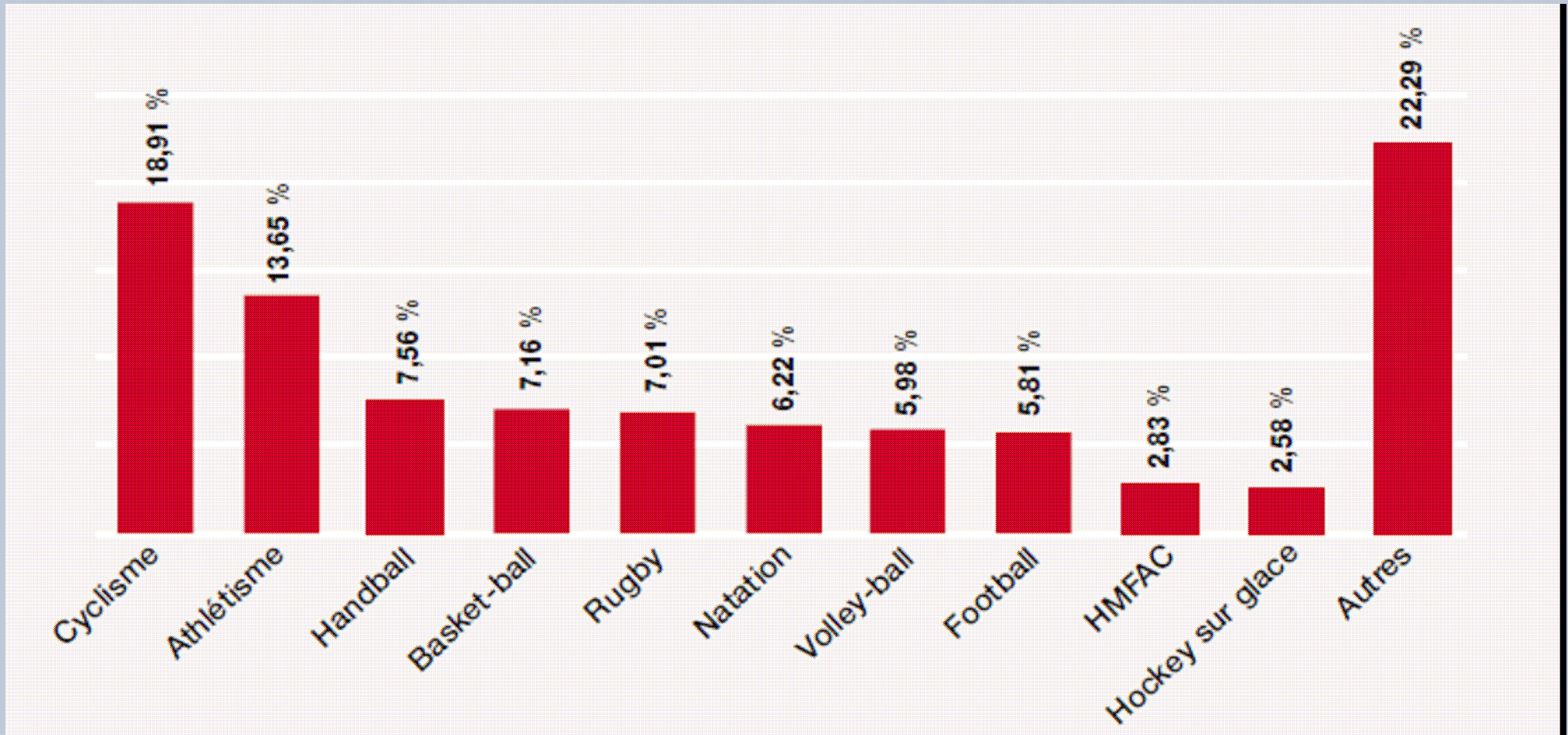
**WADA Statistics**

Includes IF tests, NADO and WADA



# Anti-doping tests conducted by NADO

- AFLD Anti-doping tests conducted in 2007





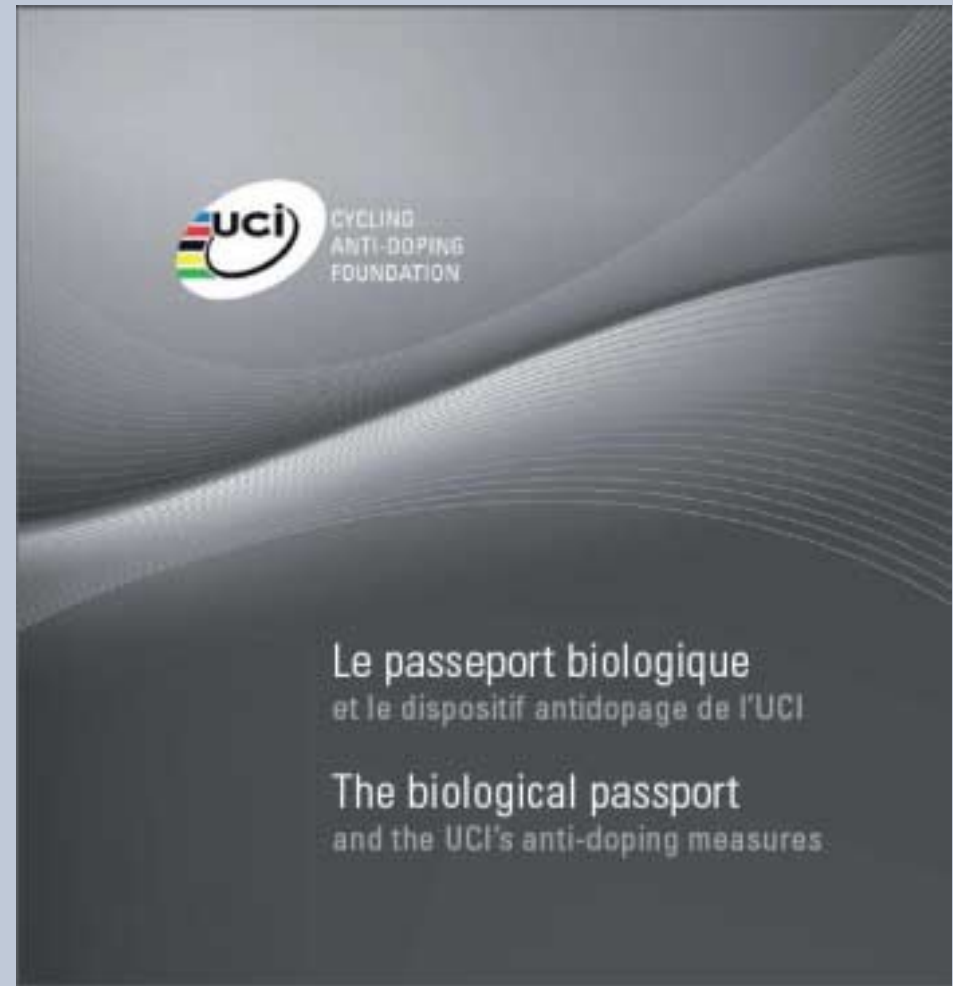
# Testing statistics for International Federations 2007

	<b>Athlete Population</b>	<b>Number of Tests</b>	<b>Number of AAFs</b>	<b>Number of ADRVs</b>	<b>Percentage of tests resulting in an AAF</b>	<b>Percentage of tests resulting in an ADRV</b>
<b>Cycling</b>	150,000	16,462	643	90	3.91	0.54
<b>Athletics</b>	1,000,000	23,305	304	74	1.3	0.32
<b>Rowing</b>		4,053	66	4	1.63	0.01
<b>Weight-lifting</b>		6620	200	43	3.02	0.64
<b>Rugby</b>		4127	67	5	1.62	0.01



# *The next generation of doping control: biological passport*

- Indirect detection widely considered the future of anti-doping by WADA, IFs, NADO and scientists
- Chasing the effects of doping, not the doping agent itself
- UCI is the first to introduce the system
- 2008 – includes 800 riders  
(18 ProTeams,  
12 Continental Pro teams)





# *Biological Passport*

- All riders are providing full whereabouts information (mostly using ADAMS)
- A complicated network of whereabouts info, testing agencies, labs, scientific experts and lawyers requiring a great deal of management and co-operation from our key stakeholders
- Several blood profiles are under review by the scientific experts and 8 cases have been opened pursuant to direct detection of substances in a passport test



Anti-Doping Administration & Management System



# Biological Passport

ABP\_blood

File Datasheet Help

Athlete  Haematology  Endocrinology  Models  Results



## Haematology

<i>select #</i>	Date [dd/mm/yyyy]	HGB [g/L]	HCT [%]	RBC [10 <sup>9</sup> /ml]	RET# [1/nL]	RET% [%]	MCV [fL]	MCH [pg]	MCHC [g/dL]	EPO [mU/mL]	sTFR [nM/L]	OFFS	ABPS	tHGB-mass [g]	Altitude [m]	Analyser	Compet
<input type="checkbox"/> 1	/2007	146	42.4	4.7	16.9	0.36	89.8	30.9	34.4			110.0	-0.4			unkno.	out
<input checked="" type="checkbox"/> 2	/2008	161	47.8	5.2	31.0	0.61	92.6	31.2	33.7			114.1	0.85			unkno.	out
<input checked="" type="checkbox"/> 3	/2008	155	46.9	5.0	105	2.10	94.2	31.1	33.0			68.1	0.77			unkno.	out
<input checked="" type="checkbox"/> 4	/2008	151	45.3	4.8	120	2.47	93.4	31.1	33.3			56.7	0.72			unkno.	out
<input type="checkbox"/> 5	/2008	166	50.7	5.3	77.9	1.47	95.7	31.3	32.7			93.3	1.60			unkno.	in
<input type="checkbox"/> 6	/2008	163	50.3	5.3	63.9	1.21	95.3	30.9	32.4			97.0	1.51			unkno.	in
<input checked="" type="checkbox"/> 7	/2008	163	49.8	5.3	47.3	0.90	94.9	31.0	32.7			106.1	1.33			unkno.	in
<input checked="" type="checkbox"/> 8	/2008	176	52.9	5.7	36.7	0.65	93.6	31.2	33.3			127.6	2.32			unkno.	out
<input checked="" type="checkbox"/> 9	/2008	168	50.9	5.4	107	1.97	93.6	30.9	33.0			83.8	1.76			unkno.	out
<input checked="" type="checkbox"/> 10	/2008	171	52.0	5.5	66.7	1.22	95.1	31.3	32.9			104.7	1.82			unkno.	in



new

open

save

calculate

export

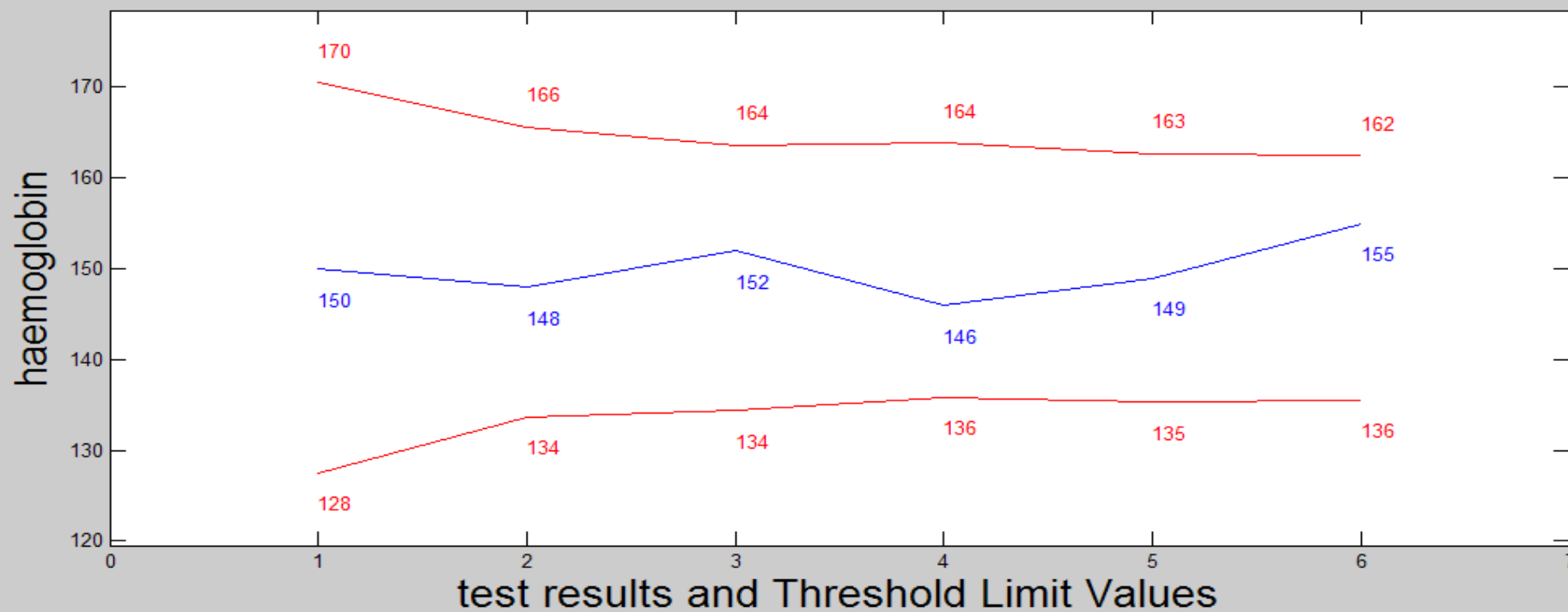
print

quit



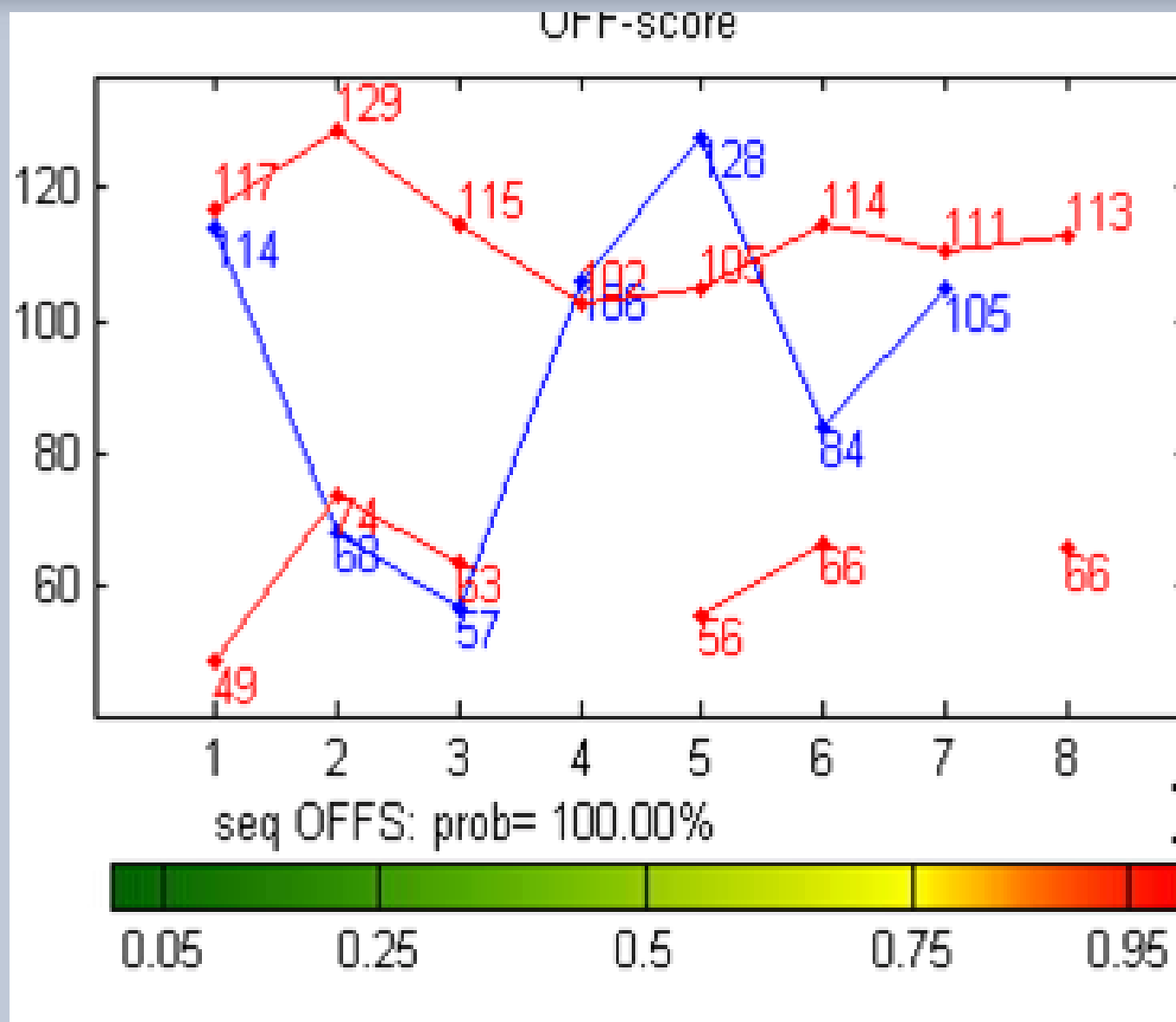
# A normal profile

Results Male Athlete



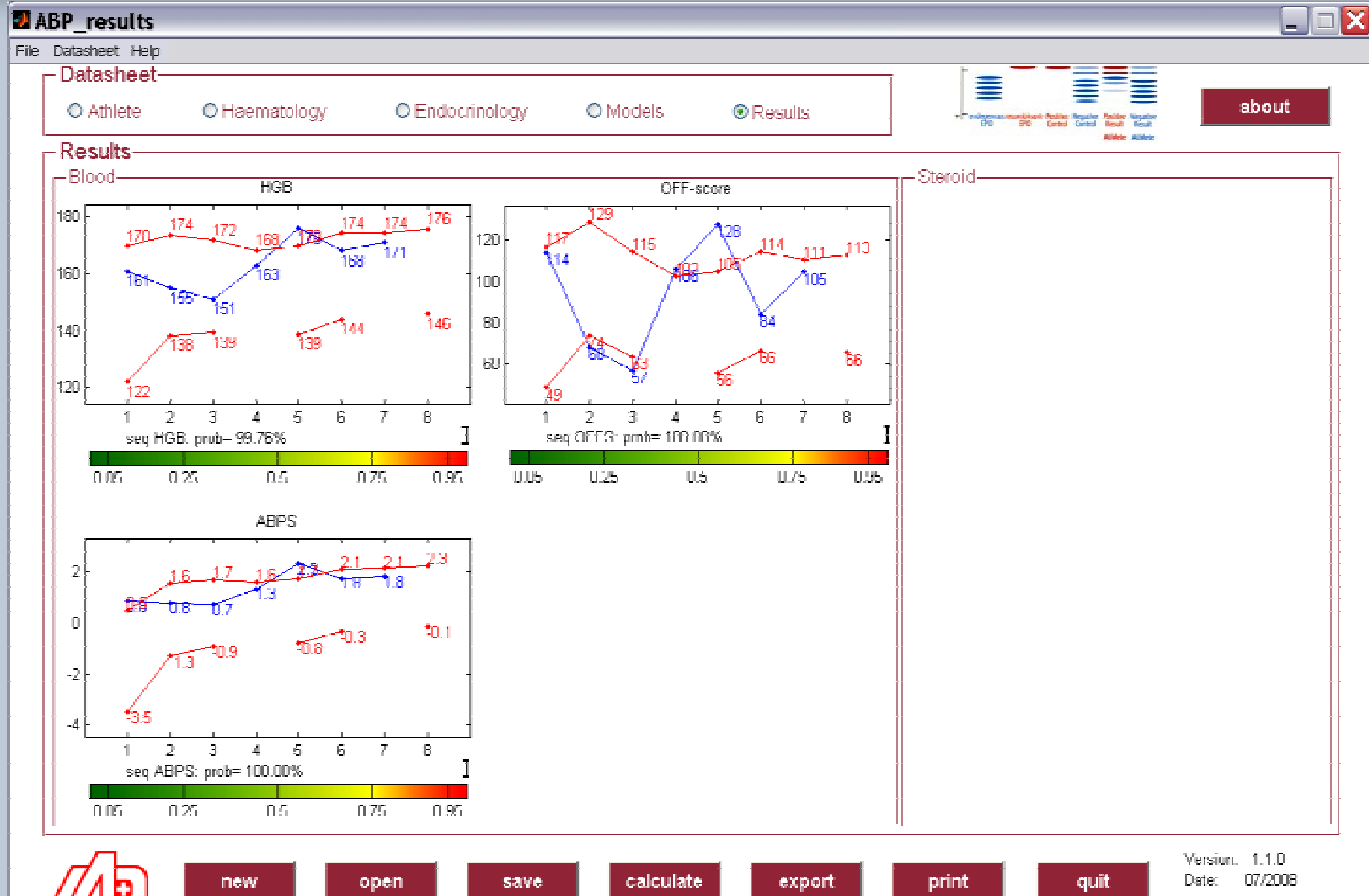


# An abnormal profile





# The total profile




new
open
save
calculate
export
print
quit

Version: 1.1.0  
Date: 07/2008



# *Strategy: more than just testing*

- Education is key
  - UCI Academy programme “True Champion or Cheat”
  - Readily available information on legal performance enhancement
- Changing the culture
  - Increasingly riders are ready to co-operate and tell us about cheats
  - There’s more open talk in the peloton about the issue recently
- Understanding the athlete
  - What makes them unlike “normal” people
  - The different triggers that lead to doping
- Bringing the teams on board as partners
  - Funding the passport
  - Support for rider education
  - Key role in creating a clean culture





# *UCI's strategy going forward*

- Continue investing in indirect detection through the passport
  - Refine blood profiling
  - Commence steroid profiling
- Continue to be at the forefront of new analytical methods for direct detection
  - New tests
  - Assistance from pharmaceutical industry
- Greater focus on the most « at risk » riders with intelligent, targeted tests
- Increasingly severe sanctions
- Improved education
- Changing the culture

